

## HSD-261P

[www.asia.security.honeywell.com](http://www.asia.security.honeywell.com)

### Weather-Proof 24-Hours Outdoor Speed Dome

Vista Series HSD-261P Speed Dome adopts Sony 1/4" ExView HAD CCD. built-in f=3.5~91mm lens. It features 26x optical zoom and 12x digital zoom with 360° rotation capability. It has high performance memory, 128 presets and real time power off memory. It is available with true day/night, self-learning auto tracks, auto scan, programmable vector scan groups and privacy zones, IP66 rated water and dust resistant functions.

The combination of the latest in digital technology and advanced video processing makes Vista Series HSD-261P Speed Dome ideally be widely used in large-scale surveillance for city surveillance, roads, and airports, government installations etc. and anywhere detailed surveillance is essential with excellent quality and highly cost-effective.

### FEATURES

- High Resolution  
1/4" ExView HAD CCD Sony, 480TVL (Color Mode), 520TVL(B/W Mode).
- Weather-proof 24-hours Surveillance  
ICR true day/night, IP66 standard, lighting & surge protector, high strength metal housing, heater and fan.
- High Speed  
Panning speed 0.1~300° /Sec, tilt speed 0.1~120 ° /Sec, preset mode at 360° /Sec, accuracy +/-0.1°
- High Performance Memory  
128 preset positions (maximum), 3 self-learning auto tracks (120 seconds per track), 6 vector scan groups, intelligent power off real time memory, 8 privacy mask zones.
- Quick Installation  
Hot plugging technology, wall & suspensory mounting selectable, digital turn over function, built-in multi protocol.

### SPECIFICATIONS

Model	HSD-261P
Sensor	1/4" ExView HAD CCD, Sony
Effective Pixels	752(H)x582(V)
Horizontal Resolution	480TVL (Color) ,520TVL (B/W)



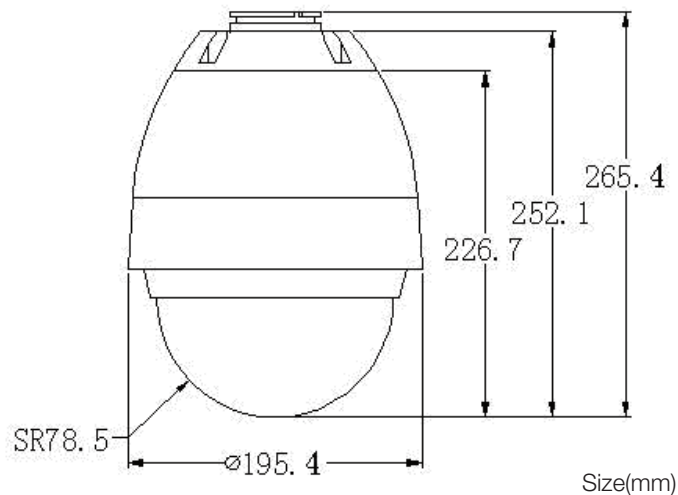
## HSD-261P

www.asia.security.honeywell.com

Weather-Proof 24-Hours Outdoor Speed Dome

### SPECIFICATIONS

Synchronization	Internal/External(V-Lock)	Pan Speed	0.1°~300°/Sec
Video Out	(1.0Vp-p), 75ohm, BNC	Tilt Speed	0.1°~120°/Sec
Minimum Illumination	1.0lx/1/50sec: ICR-OFF	Preset Speed	360°/Sec
	0.07lx/1/3sec: ICR-OFF	Accuracy	0.1°
	0.15lx/1/60sec: ICR-ON	Turn Over	Digital Turn Over
	0.01lx/1/3sec: ICR-ON	Preset Positions	128 Maximum
Electronic Shutter	1/3~1/10,000 Sec	Power Off Real	Yes
Signal-to-Noise Ratio	> 50dB	Time Memory	
BLC	BLC ON/OFF	Long-focus Speed-limited	ON/OFF
Aperture Range	F1.6(wide)~F3.8(tele)	Camera ID Range	0~255
Focal Length	f=3.5mm~91mm	Control	RS-485
Angular Field of View	55°(wide)-2.3°(tele)	Operation Temperature	-20°C ~55°C
Dome Size	6"	Power Consumption	35W
Vector Scan Groups	6	Certification	CE, FCC
Pan Angle	360° Rotation Capability	Size	195.4(W) X 265.4(H)mm
Tilt Angle	0° ~90°	Weight	3kg
Auto Scan	ON/OFF		
White Balance	Manual/Auto/Indoor/Outdoor/ATW		
Zoom	26x Optical Zoom, 12x Digital Zoom		
PTZ Tours (Pattern)	3 Programmable, 120 Seconds		
Protocol	Pelco D/P, KD6, VCL, Maxpro Mode		
Power Input	24VAC 2A 60Hz/50Hz, Surge Protector		



## HSD-261P

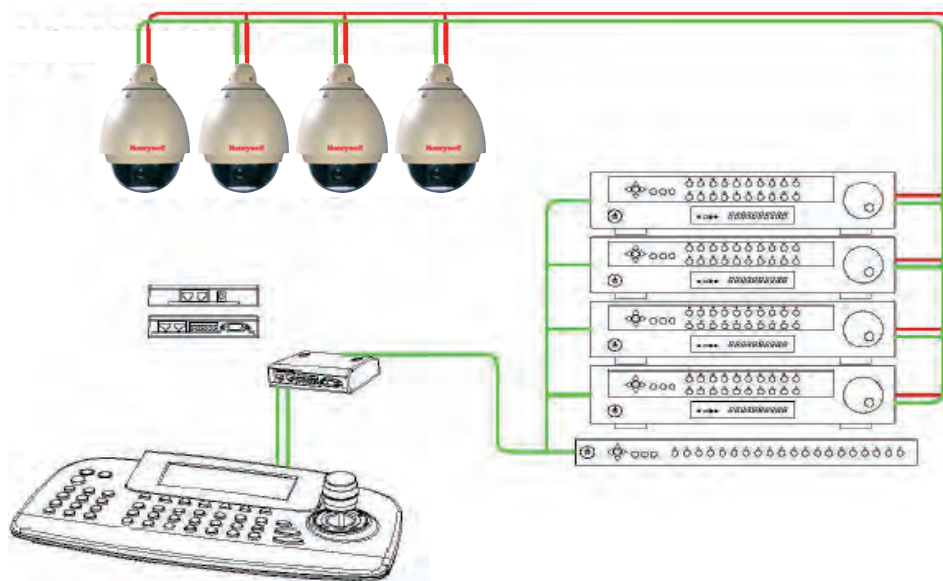
www.asia.security.honeywell.com

Weather-Proof 24-Hours Outdoor Speed Dome

### PACKAGE

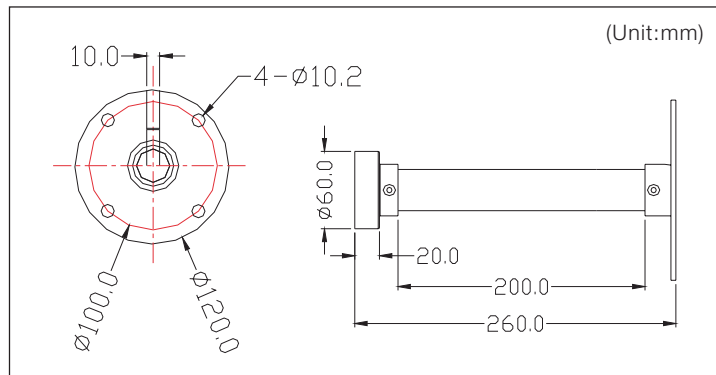
Qty	Components
1	HSD Series Speed Dome Camera
1	Operation Manual
1	Wall Mounting Bracket
1	Power Supply
1	Video & Control Cable

### CONFIGURATION



### ACCESSORIES MOUNTS

HSDCM1	Outdoor Ceiling Mount
Construction	Zincification Pipe
Finish	Spray Powder
Dimension	See the Drawing
Environment	Indoor and Outdoor
Weight	1.96lbs (0.88kg)
Max Load	27.1lbs (12.2kg)
Wind Load	121kph



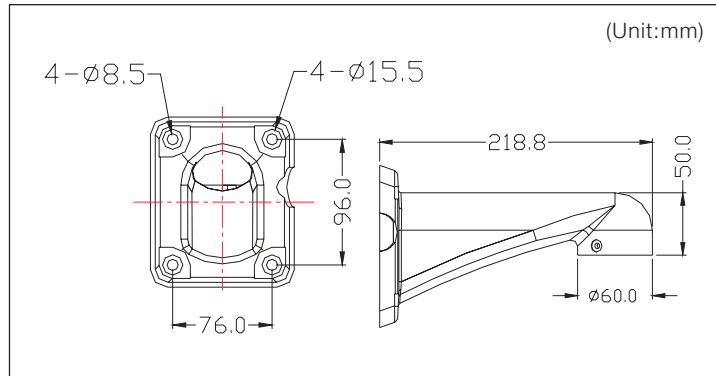
# HSD-261P

www.asia.security.honeywell.com

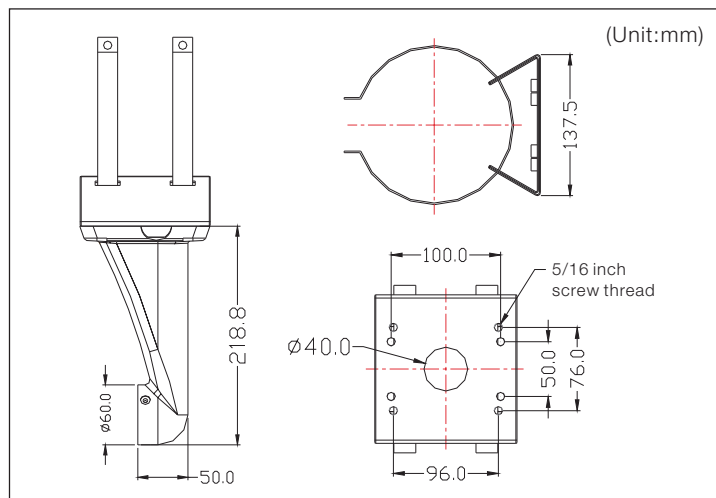
## Weather-Proof 24-Hours Outdoor Speed Dome

### ACCESSORIES MOUNTS

HSDWM1	Outdoor Wall Mount
Construction	Aluminium
Finish	Spray Powder
Dimension	See the Drawing
Environment	Indoor and Outdoor
Weight	1.44lbs (0.645kg)
Max Load	24.7lbs (11.1kg)
Wind Load	121kph



HSDPMA1	Pole Mount Adapter
Construction	Aluminium
Finish	Spray Powder
Dimension	See the Drawing
Environment	Indoor and Outdoor
Weight	1.73lbs (0.78kg)
Max Load	25.6lbs (11.5kg)
Wind Load	121kph



For more information:

Security Asia Pacific Headquarters  
 Security Australia  
 Security Australia National Sales Hotline  
 Security China  
 Security China Customer Service Hotline

Tel: (86) 21-5257 4568  
 Tel: (61) 2-9353 7000  
 Tel: 1300 765 532  
 Tel: (86) 21 5257 4568  
 Tel: 400-8800-330

Security Hong Kong Tel: (852) 2405 2323  
 Security India Tel: (91) 124 4029800  
 Security Korea Tel: (82) 2-799 6130  
 Security Singapore Tel: (65) 6333 9563  
 Security Taiwan Tel: (886) 2-2245 1000

www.asia.security.honeywell.com  
 security.ap@honeywell.com

**Honeywell Security & Data Collection**  
 Automation & Control Solutions  
 Honeywell International Inc.

Jul 2009  
 © 2009 Honeywell International Inc.

**Honeywell**